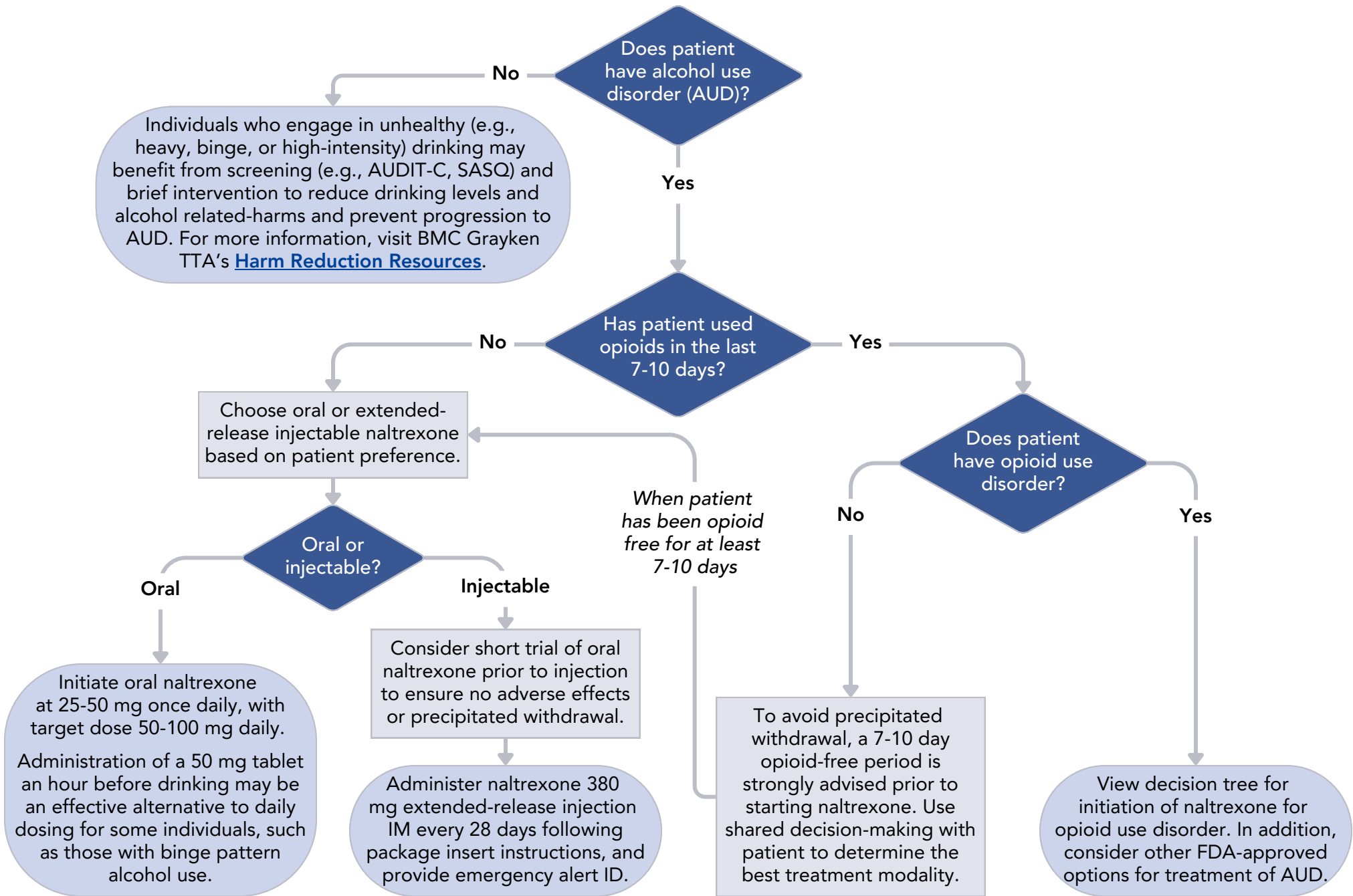


INITIATION OF NALTREXONE FOR ALCOHOL USE DISORDER*



* Naltrexone does not treat symptoms of alcohol withdrawal. Alcohol withdrawal can be severe and life threatening. It is imperative to utilize clinical judgement if a patient is medically able to undergo treatment in an outpatient setting prior to initiating treatment.