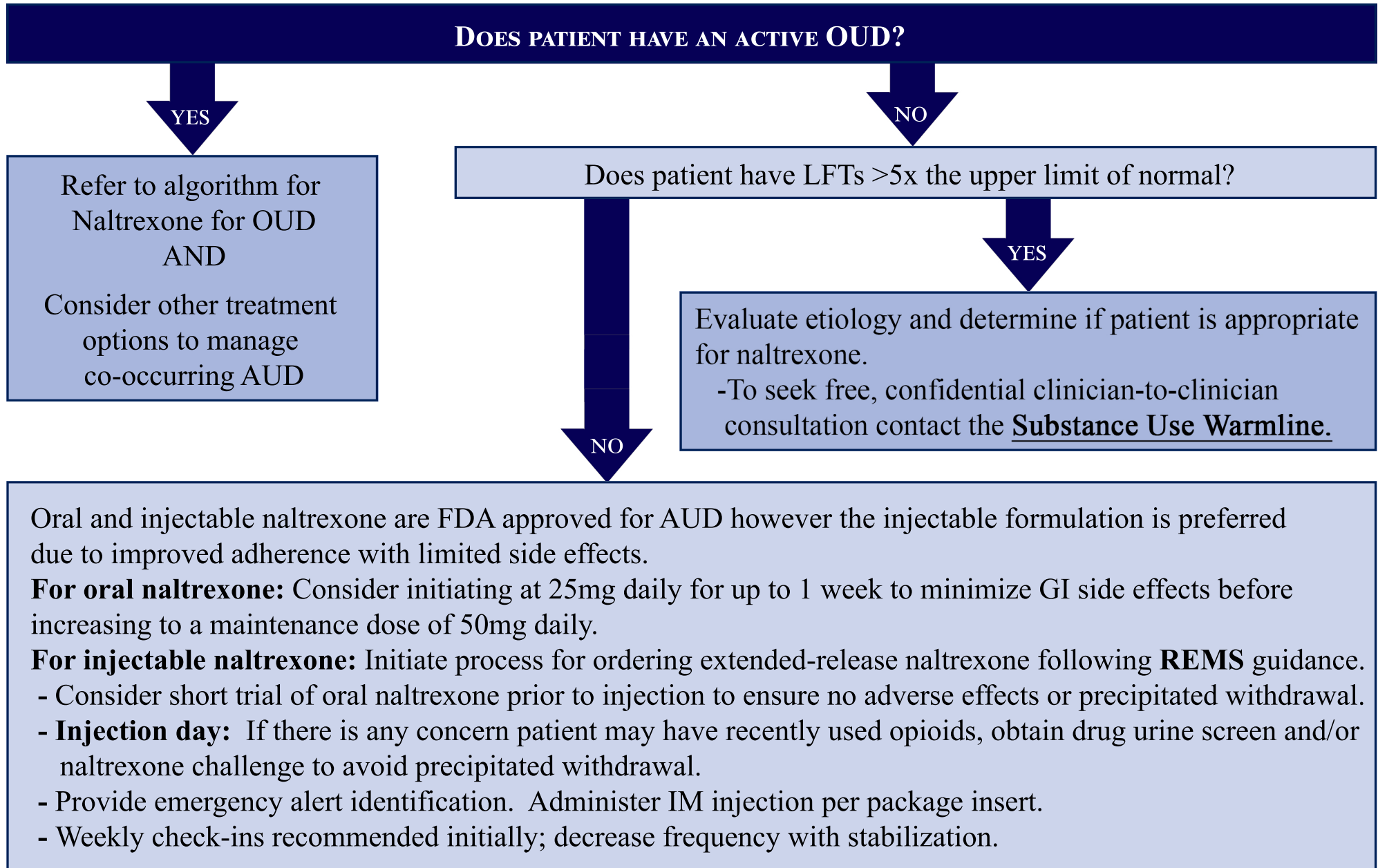


# NALTREXONE INITIATION FOR ALCOHOL USE DISORDER \*



\* Naltrexone does not treat symptoms of alcohol withdrawal. Alcohol withdrawal can be severe and life threatening. It is imperative to utilize clinical judgement to determine if a patient is medically stable to undergo treatment in an outpatient setting prior to initiating treatment