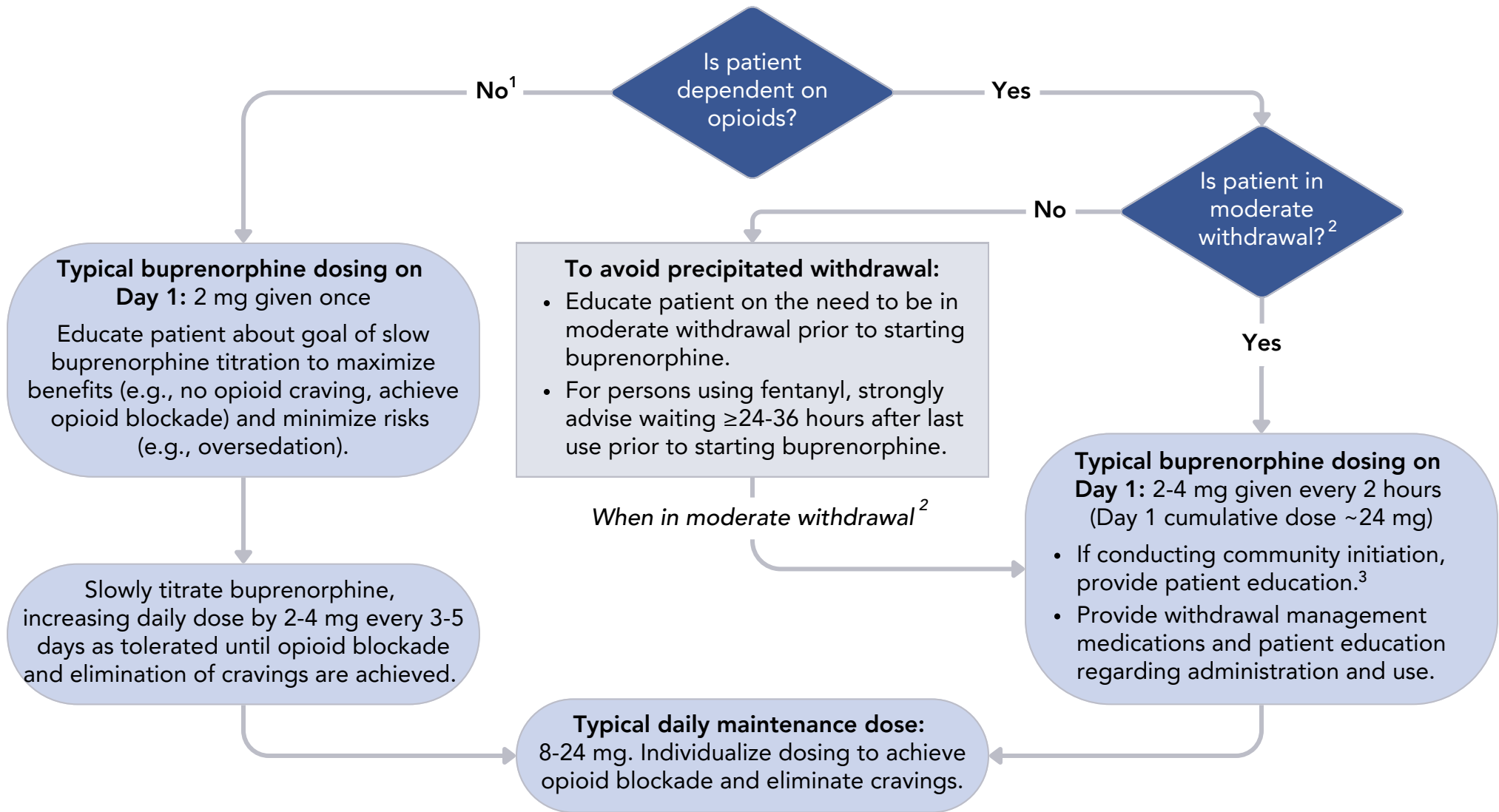


INITIATION OF TRANSMUCOSAL BUPRENORPHINE FOR OPIOID USE DISORDER

NOTE: Buprenorphine initiation can be challenging, especially as high-potency synthetic opioids, namely fentanyl, have saturated the US opioid supply. Thus, when considering starting buprenorphine it is critical to utilize clinical experience, judgment, and shared decision-making to determine the best plan of care and setting to initiate buprenorphine treatment. For challenging patient cases, consultation with an addiction expert through the [Providers Clinical Support System](#) or [National Clinician Consultation Center](#) may be beneficial to determine the next best steps.



1. May include individuals who were recently released from incarceration, have a history of opioid use disorder but are not currently using opioids, or are switching from naltrexone.
2. ≥ 4 symptoms increasing from normal or a COWS score of ≥ 13 .
3. View Grayken TTA's buprenorphine initiation guide for patients.