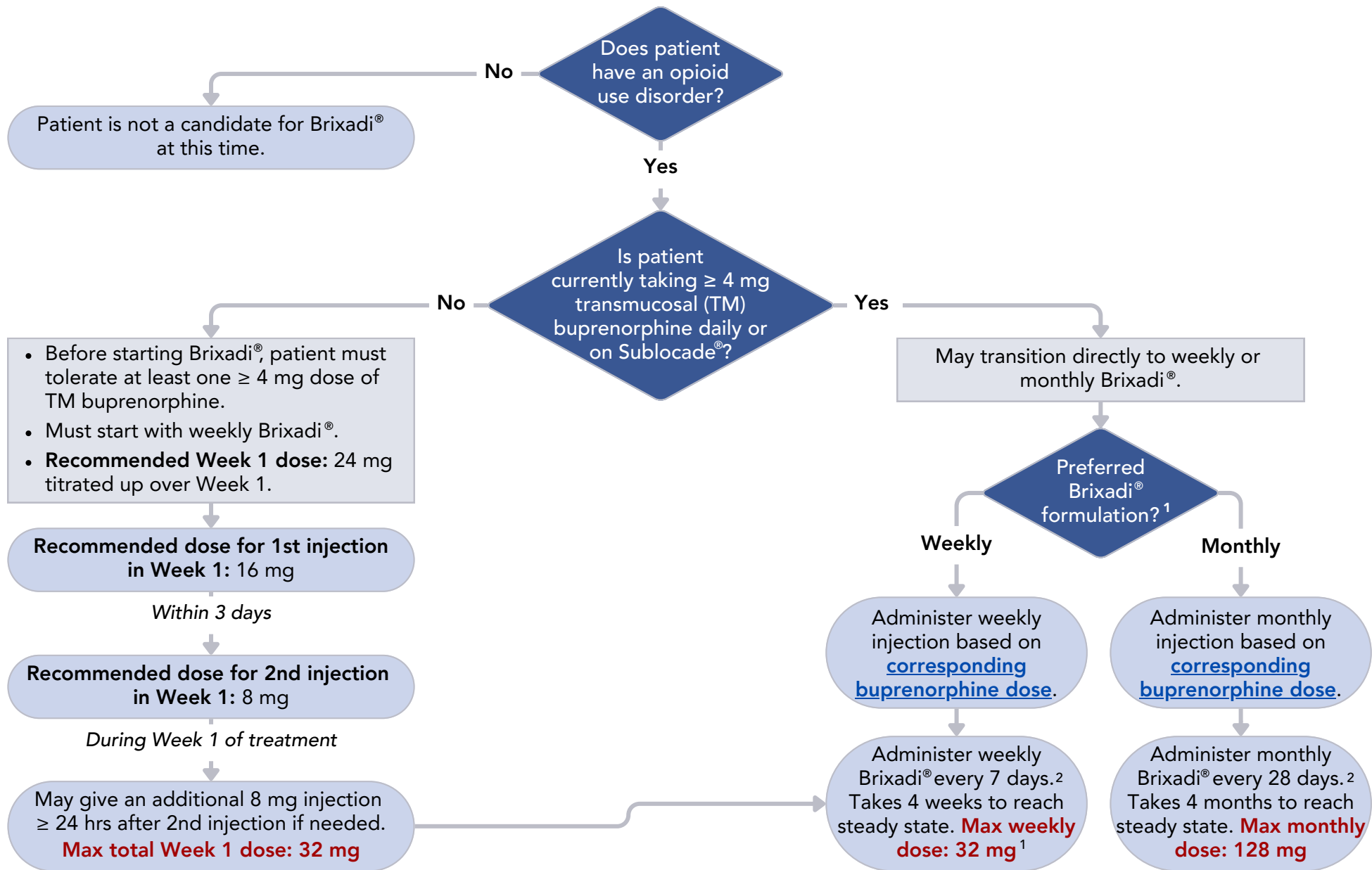


# INITIATION OF BRIXADI<sup>®</sup> EXTENDED-RELEASE INJECTABLE BUPRENORPHINE FOR OPIOID USE DISORDER



1. Brixadi<sup>®</sup> weekly and Brixadi<sup>®</sup> monthly are different formulations. Weekly injections cannot be combined to yield a monthly dose. Patients may be transitioned from Brixadi<sup>®</sup> weekly to Brixadi<sup>®</sup> monthly OR monthly to weekly based on clinical judgment and patient preference.

2. Routinely assess for cravings, withdrawal symptoms, continued illicit opioid use, and adverse effects, adjusting the dose as needed.